

# Sodus Bay Maritime Captains Association

---

## Fishing Line Recycling Program



# How did the Fishing Line Recycle Program begin?

---

The National Fish and Wildlife Foundation (NFWF) and the NOAA's Marine Debris Program funded BoatUS with grants to make recycling old fishing line easier.

[Video: About the Monofilament Recycling Program](#)



# Does it really make a difference?

---

**Yes!** There are more than **13,000** fishing line **recycle bins** across the U.S.A. that have contributed to more than **20,000 miles** of properly disposed fishing line.



# Why is it important to recycle fishing line?

[Video: Why should recycle your fishing line](#)



Poorly discarded fishing line threatens marine life, damages boats, and fouls propellers. Recycling old fishing line will proactively solve these problems.

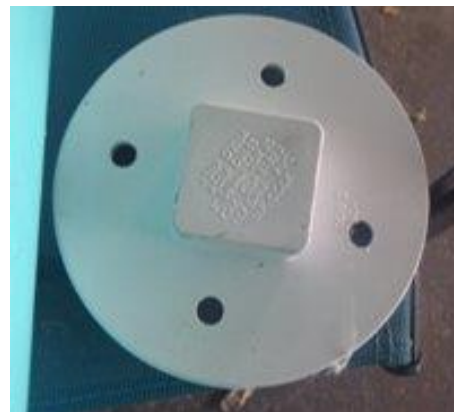
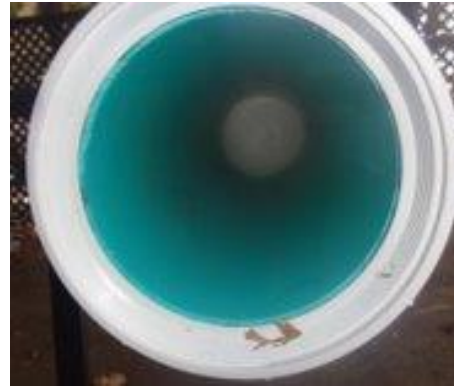
Coastal and inland fishing areas keep our waterways healthier and safer for boaters and wildlife.



Video: How to  
Build a  
Monofilament  
Recycle Bin



Capt. T. Maxam, March 2023



# *Current concerns...*

---

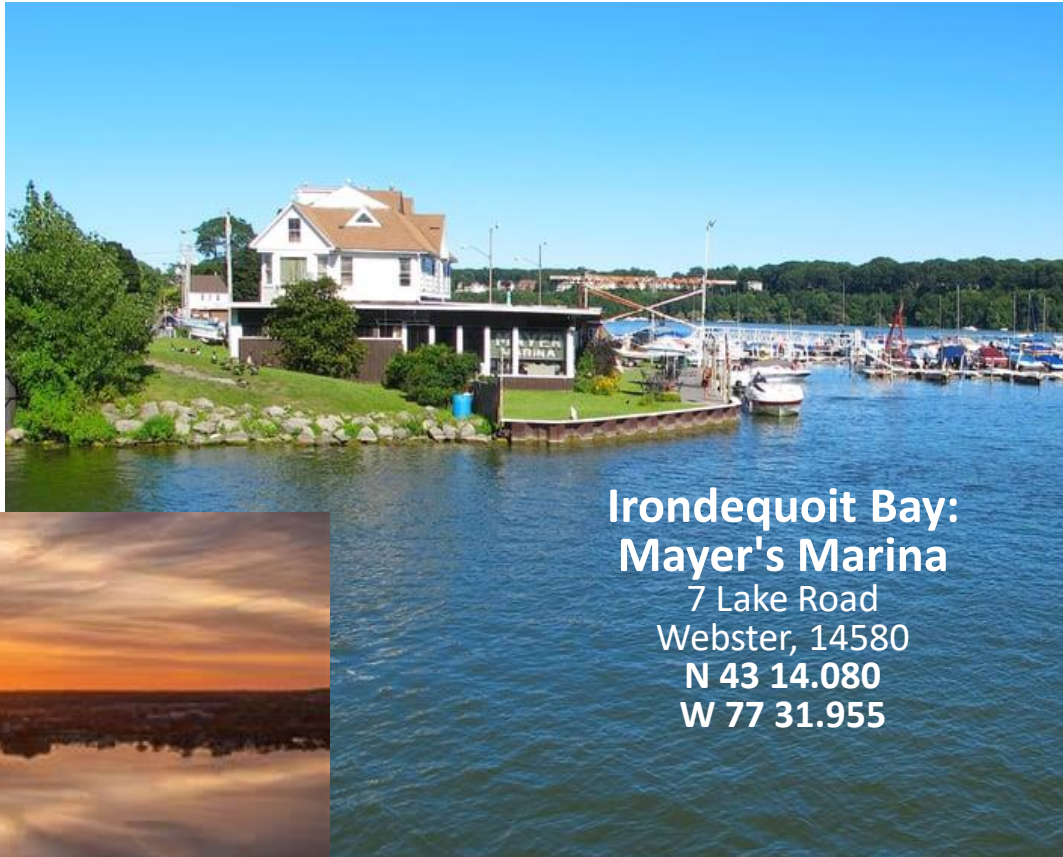
# Fishing Line Recycling Locations



**Sodus Point:  
State Boat Launch**  
Route 14  
Sodus Point, 14555  
N 43. 2632879  
W 76. 9785793



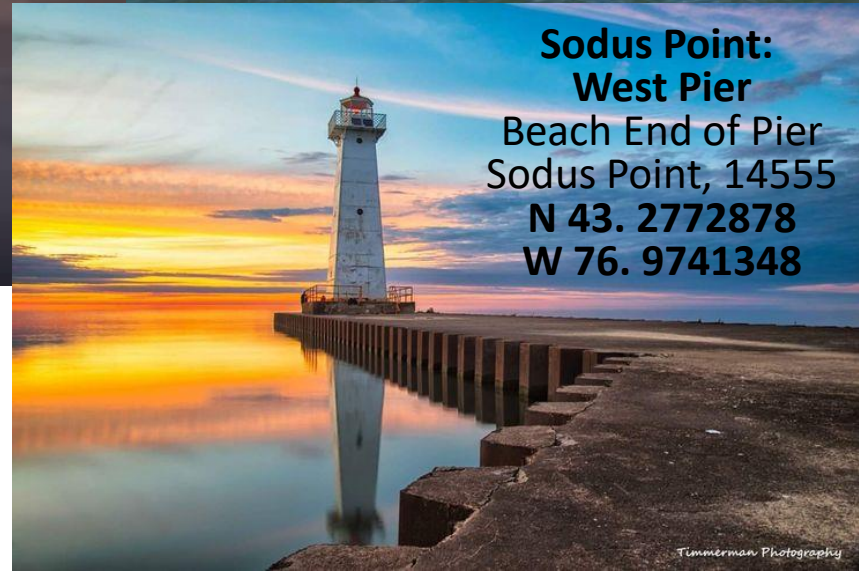
**Canandaigua Lake:  
Canandaigua Pier**  
Lakeshore Drive  
Canandaigua, 14424  
N. 42.875340  
W. 77.261820



**Irondequoit Bay:  
Mayer's Marina**  
7 Lake Road  
Webster, 14580  
N 43 14.080  
W 77 31.955



**Sodus Point:  
Katlynn Marine**  
7448 State Route 14  
Sodus Point, 14555  
N 43 16.33  
W 76 58.23



**Sodus Point:  
West Pier**  
Beach End of Pier  
Sodus Point, 14555  
N 43. 2772878  
W 76. 9741348

# *Bin Locations Coming Soon...*

**Genessee River:  
Shumway Marine  
40 Marina Drive  
Rochester, 14617  
N 42.379890  
W 76.873080**

**Seneca Lake:  
Harbor Park Pier  
2144 Franklin St.  
Watkins Glen, 14891  
N 42.379890  
W 76.873080**





*A special thanks to  
Captain Mike and  
Captain Kim Ragan  
for donating five  
fishing line recycle  
bins!*

---

